

Switching Variables between plots

Occasionally it is necessary to quickly switch variables between the Y1 axis and the Y2 axis. This is frequently necessary because the range of the variables plotted is vastly different. In this example, we are using the files created in Chapter 8. See: http://wiki.olisystems.com/wiki/images/5/53/Chapter_08.zip for the latest version of the worked file or **pH (Mixer)** in Chapter 8 on page 144 above.

In this example, we are mixing an acidic stream containing citric acid with a basic stream containing NaOH. Here is the resultant plot. Here is the resultant plot:

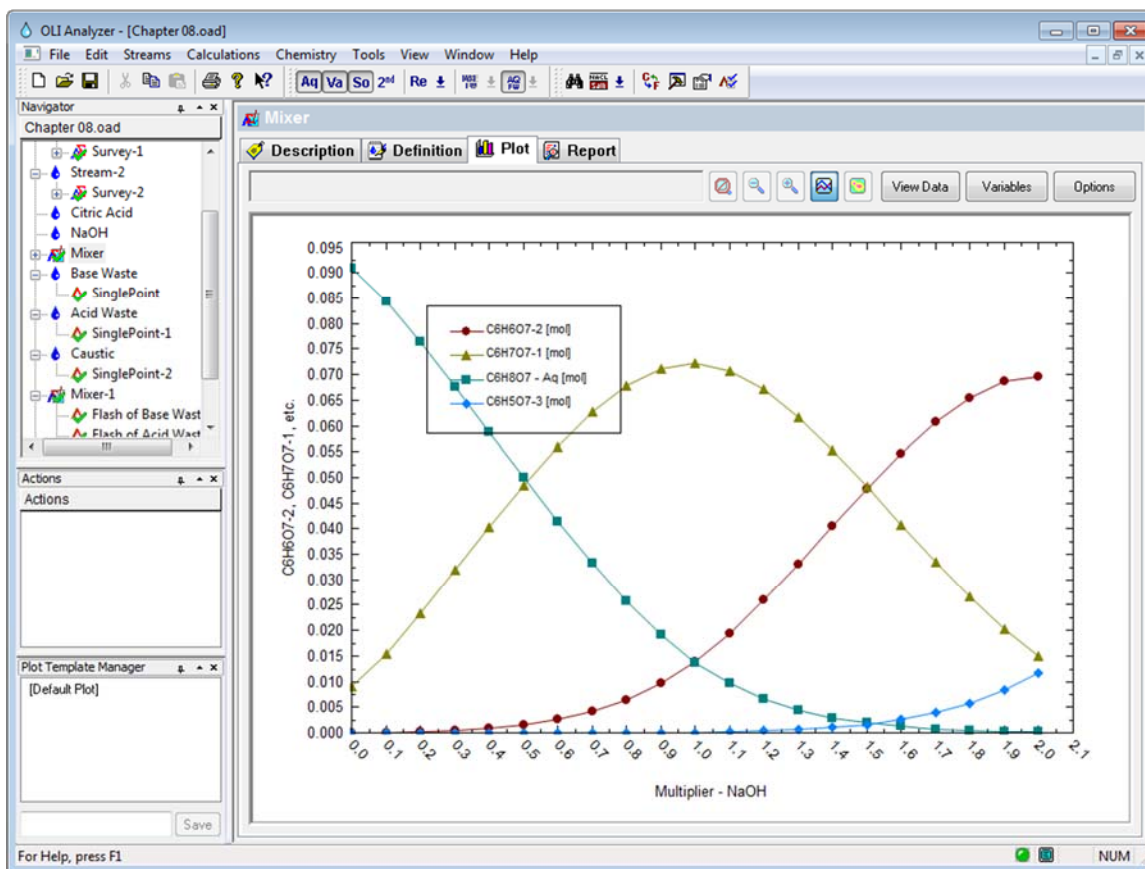


Figure 14 Chapter 8 citric acid survey

Perhaps we want to see an additional variable such as pH on this plot. Using the **Variables** button, select pH from the *Additional Stream Parameters* category.

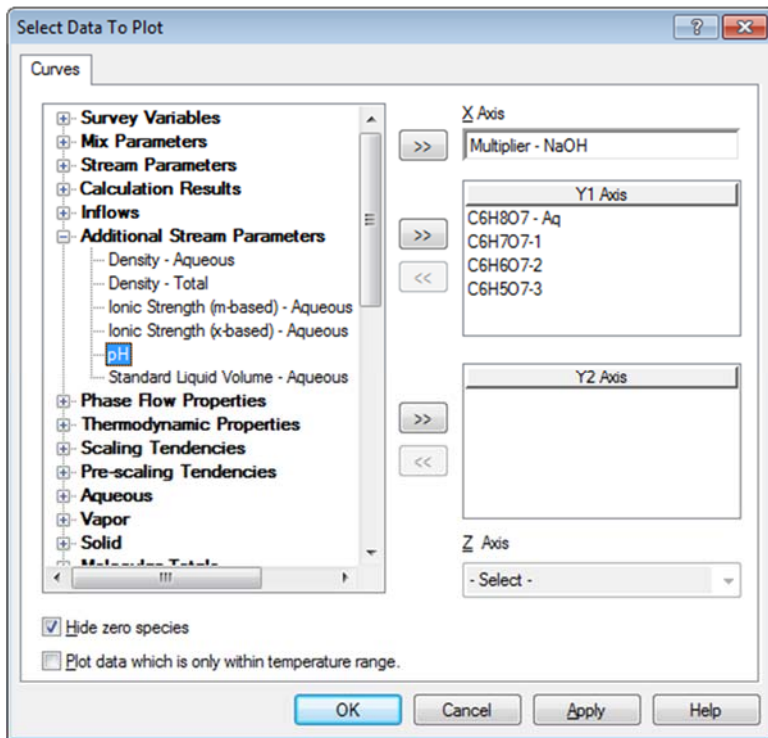


Figure 15 Selecting pH from the Additional Stream Parameters

This will put the pH on the Y1 axis by default. Here is the resultant plot:

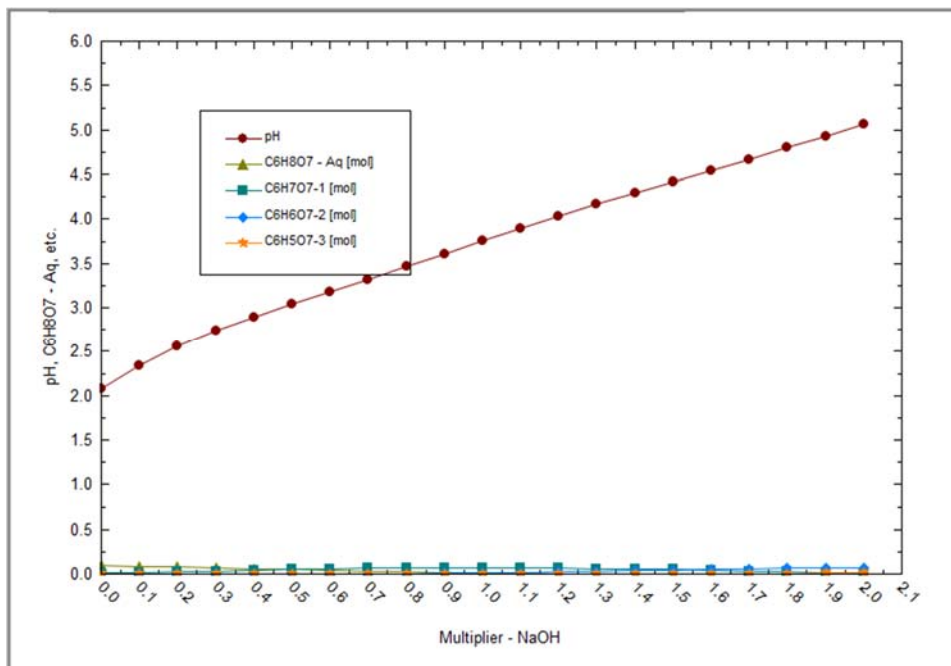


Figure 16 pH plotted, this skews the view

The variable “pH” has dominated the plot. Its values dwarf the vales of the ions. The pH variable should be plotted on the Y2 axis.

We can switch the variables easily. Using the **Variables** button. Highlight the pH variable in the Y1 axis box.

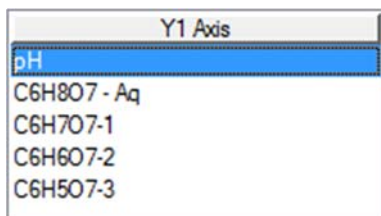


Figure 17

Now right-click the variable

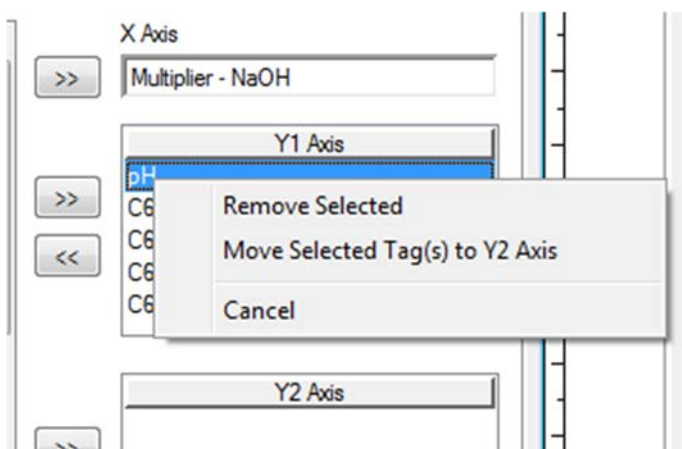


Figure 18 Right-clicking "pH"

Select **Move Selected Tag(s) to Y2 Axis**

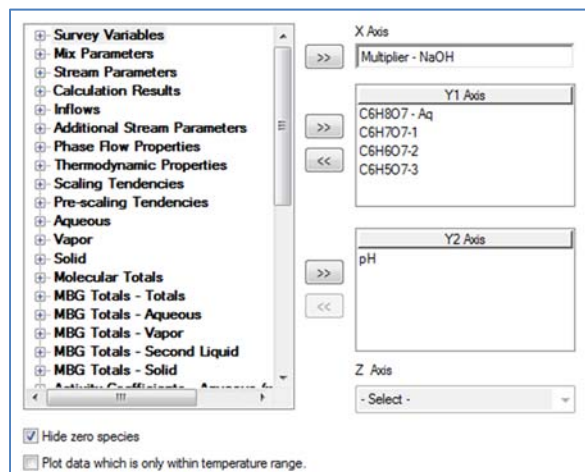


Figure 19 Variable moved

Here is the updated plot.

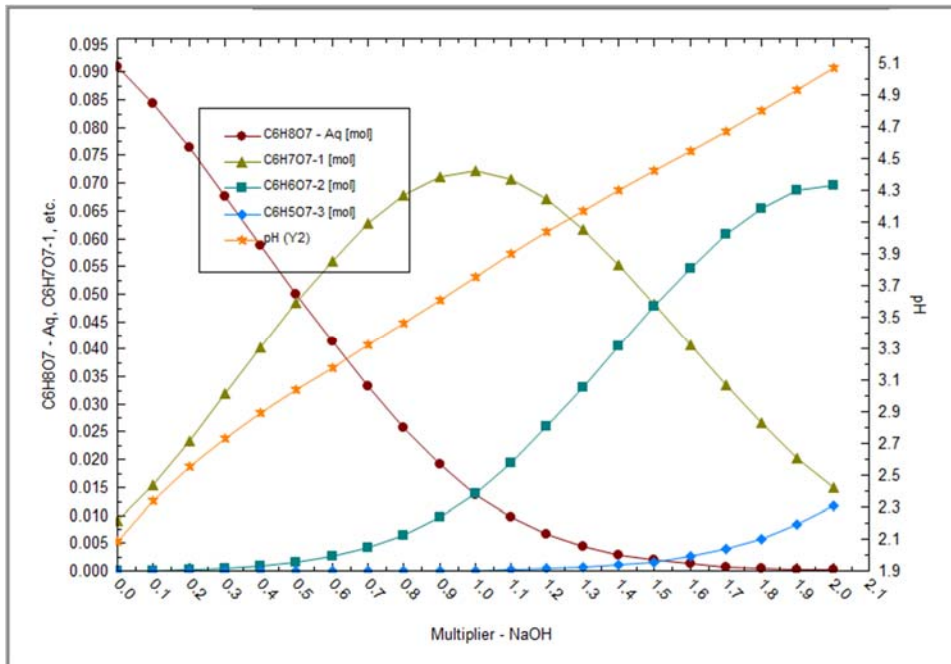


Figure 20 Updated plot with Y2 axis variable